



Series: SS0009
Month: April 2017
Supersedes all earlier TDS

SUPER STUCCO

ULTRATECH

SUPER STUCCO

ULTRATECH

Description

UltraTech **SUPER STUCCO** is a ready mix cement based polymer enriched high performance surface finishing material incorporated with high quality polymer additives, graded sand and fillers for thin bed /coat applications. UltraTech **SUPER STUCCO** is highly suitable for direct application over smooth concrete surfaces without hacking and requires no curing after application.

Specification

Technical parameters complies with IS 1661-1972, IS 2250-1981.

Features & Benefits

- Ideal for thin coat applications
- Excellent adhesion properties with the substrate
- Quality thin plastering since it does not contain any impurity
- Negligible wastage due to least rebound
- Consistent quality made using mix of well graded sand and additives
- Reduced water absorption hence enhanced durability
- Convenient to apply
- Subsequent application of paint or putty after 24 hours
- No water curing
- Uniform and smooth finish to walls
- Faster completion of work

Areas of Application

UltraTech **SUPER STUCCO** can be used for thin coat plastering on inner and outer walls. It can also be used effectively on brick, block, stone walls as well as concrete surfaces.

Ideal for well-prepared walls with maximum thickness of plastering in the range of 3-6 mm. Highly recommended over Mivan finishes, smooth concrete areas without any hacking of the surfaces.

Suitable as a direct surface finishing material for columns, ceilings, beams. Very effective for filling the plumbing and electrical conduit linings. UltraTech **SUPER STUCCO** can be used as a top coat thin screed layer after the water proofing applications with UltraTech Seal & Dry.

METHOD OF APPLICATION

Surface Preparation



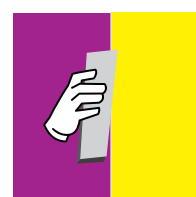
- Prepare the surfaces before the UltraTech **SUPER STUCCO** application by removing oil, bond inhibiting agents, dirt, dust and laitance
- The cleaning can be carried out with suitable methods like by using wire brush, water jetting, mopping etc
- Surface should be pre-wetted and has to be in SSD condition before application of UltraTech **SUPER STUCCO**
- No hacking or grinding is required before the application. In case of any honey combs or cracks, necessary preparatory works has to be carried out prior to the application of UltraTech **SUPER STUCCO**

Mixing



- UltraTech **SUPER STUCCO** requires 25-30% of water by weight of material
- Mix UltraTech **SUPER STUCCO** to the measured quantity of water using mechanical stirring for 2-3 minutes to ensure a consistency free of lumps
- Mix only the required quantity of material which can be consumed within the 2 hour pot life and do not mix any additional water than the prescribed water ratio to the already mixed UltraTech **SUPER STUCCO**

Application



- Apply UltraTech **SUPER STUCCO** with perfect level putty blades, leveling edges over well prepared surfaces
- Care should be taken to avoid higher thickness of application more than 6 mm per coat, if thickness more than 6 mm is required adopt multiple layer application method
- For curved, unique geometrical shapes, corners etc appropriate leveling tools to be used for UltraTech **SUPER STUCCO** application

TECHNICAL DATA AS PER RELEVANT IS AND ASTM STANDARDS

Bulk density	1450-1550 Kg/m ³
Water powder ratio	25-30% by weight
Pot life	2 hour @ 27°C
Compressive Strength @ 28 Days	5-6 Mpa
Coverage per 25 Kg bag	60 Sq.ft. @ 3 mm
Thickness of layer	3-6 mm per coat
Water curing	NIL
Wastage	Negligible
Final finish	Smooth and excellent
Pull out adhesion (EN 1348) @ 28 Days	0.8 N/mm ²
Water absorption by Karsten tube method	0.2 ml @ 24 hours

Note

The technical data provided in this technical data sheet is as per our internal lab testing and may vary as per the actual method of application at sites.

Consult UltraTech Building Products Division Technical Services Cell for any further technical assistance.

Packaging

25 Kg bags.

Shelf Life

UltraTech **SUPER STUCCO** has a shelf life of 12 months from the date of manufacture. Store at cool and dry place.

Safety Directions

UltraTech **SUPER STUCCO** is non-toxic. Use of gloves and goggles recommended. Any splashes to the skin or eyes should be washed off with clean water immediately. In case of prolonged irritation, medical advice should be sought. UltraTech **SUPER STUCCO** is non-flammable.

Other Product Categories available with UltraTech Building Products Division

- Tile Adhesives
- Micro Concrete and Repair Product
- Industrial/Precision Grout and Anchors
- Water Proofing and Injection Grouting Material
- Jointing Mortar
- Floor Screeds
- Autoclaved Aerated Lightweight Concrete Blocks

DISCLAIMER

Information provided on this data sheet is the guideline for usage. Users are advised to undertake a trial for product suitability prior to its full scale usage. There is no implied guaranty/warranty for the results and the company is not liable for any consequential damages.



UltraTech Cement Limited (Building Products Division)
Regd. Office: 2nd Floor, B-Wing, Ahura Centre, Mahakali Caves Road, MIDC, Andheri (East), Mumbai - 400 093, India | Tel.: +91-22 6692 8200 | Email: ultratech.care@adityabirla.com
Website: www.ultratechcement.com | Toll Free: 1800 425 2525
Regional Offices: • Bangalore: 080 22250748 • Hyderabad: 040 42024194
• Pune: 020 41486600 • Ahmedabad: 079 49004545 • Indore: 0731 2543206
• Delhi: 0120 4856000 • Kolkata: 033 30214100/4400

